



**ROLMAN  
WORLD**

# **Corporate Profile**





## Table Of Content

04

Overview

05

Message from  
the board

18

Automotive  
Trade

20

Industrial  
Services (MRO)

06

Company  
Timeline

08

Milestone

22

Power  
Generation

24

B.World  
Logistics

10

Partnership with  
Our Suppliers

12

Serving the  
EMEA region  
& branches

26

BW  
Products

28

BW  
Lubricants

14

Five Specialised  
Divisions

16

Industrial  
Trade

29

Rolman World  
UK

30

Rolman World  
Group



# Overview

Over 50 years of Experience with Industry.

From a modest start over 50 years ago, the Rolman World Group has evolved into the region's premier distributor for Industrial, Automotive Spare Parts and Services. From our roots as a bearing distributor, we have, through remaining focussed on our principles of quality and delivering exceptional customer service, grown to become MEA's leading replacement parts & technical services provider. We pride ourselves in being the distributor-partner of choice for our loyal customers across the region.



Unrivalled in our ability to supply our customers with high-quality, competitively priced premium brands from around the globe, we offer a diverse range of products to effectively satisfy their business and application needs. We are continually strengthening our product range through developing partnerships with the world's leading manufacturers. Over the past years, we have added important market-leading brands to our portfolio in order to build value for our customers in applications using Bearings, Belts, Chains, Seals, Filters, Lubricants, Automotive Spare Parts, Generators, Compressors, Welders, and many other complimentary items –products that are now an essential part of our portfolio available across the entire region.



As our wide range of products has grown, we have continued to develop our state-of-the-art distribution services to ensure that our customers receive an unparalleled level of service, quality, and support. As the region's leading distributor, our focus lies in providing technical support that guarantees maximum value from the world's best brands.

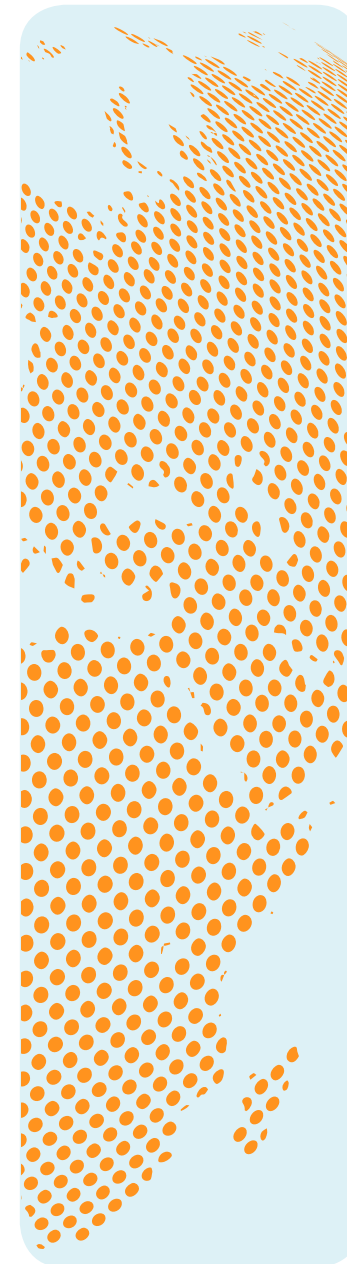
No matter which industrial or automotive parts you require, Rolman World can and will deliver.



As our company continues to expand, we aim to adopting a greener future for the safety of societies and protecting the global environment. We plan to achieve this by reducing waste, recycling, conserving energy and resources. This have been implemented in our day-to-day work by creating a dynamic environment, participating in environmental activities, and installing solar panel systems across 10,000 square meters.

We look forward to continuing and improving the success of this initiative across the entire group. As important as green solutions are, we also aim to take our technological solutions to the next level by introducing solutions that accelerate our performance. We plan on doing this by using technology and digital solutions that stream line our customer and suppliers experience.

# Message from the Board



For the past five decades, we have worked diligently to strengthen and expand our business reach, industry knowledge, and product range to ensure that we are poised to meet our customers' ever-evolving demands.

2019 marked our 50th anniversary of operating across the MEA region. The completion of our new headquarters in Dubai helped launch an array of new opportunities and business growth. With a growing network of branches strategically located across MEA, we have set our sights on strengthening our market-leading position in five key business areas – Industrial Power Transmission, Automotive Aftermarket, Industrial Services, Power Generation, and most recently, Logistics.

As we continue to look to the future, we will pursue our strategies to expand our presence through our partnerships and stakeholders, whilst at the same time building exciting new ventures and alliances across the MEA region. It has become increasingly clear that the region will be one of the world's key economies in the future. We are well placed to lead the changes which have become necessary in our industry, as our customers become even more demanding of their suppliers.

Furthermore, in 2020 we began further geographical expansion with the establishment of 3 new branches in the UK. In the coming years, we will begin operations in other countries in Europe in which we foresee opportunities based on implementing our differentiated business model.

I would like to express my deep appreciation to our customers, suppliers, and business partners for their continued support. In particular, I would like to thank our team of dedicated employees, since without their vision and commitment none of this would be possible.

Together we look forward to the next decades of success in the Middle East, Europe, and Africa, and we look forward to achieving it with you.

Mr.Hassan Muazzen  
Chairman



# Company TimeLine

The timeline below demonstrates the establishment, accomplishments, and knowledge that Rolman World Group has achieved to become the dominant distributor in the region.

## Introductory phase

**1953** - Mr. Hasan Muazzen starts working in bearings and related industrial items.

**1969** - BW Company is founded

## Development phase

**1971** - Starts distributing NSK products

**1994** - Rolman World established in Dubai, UAE

**1997** - Formal Agreement signed with NSK

**1998** - Registers and produces BW bearing brand in China  
- Becomes Authorised Distributor for IKO and Schaeffer Group's KBC



## Growth phase

**2000** - Rolman World becomes Master Distributor for NSK

**2002** - Introduces Automotive Trade and Industrial Trade divisions

**2003** - Becomes Authorised Distributor for NOK

**2004** - Opens Rolman World FZCO Jebel Ali, Dubai  
- Becomes Authorised Distributor for Timken, Mitsubishi, and FYH

**2006** - Saudi Arabia operations established



**2007** - Produces BW Fuel Filters

**2009** - Iraq operations established in Baghdad  
- Produces BW-O-Ring

**2010** - Establishes BW bearings brand in Algeria  
- Produces BW Mechanical Seals

**2011** - Jordan operations founded in Amman

**2013** - Becomes Authorised Distributor for Denyo  
- Introduces MRO and Power Generation divisions

**2014** - New Dubai HQ opens in Jebel Ali  
- Qatar branch established in Doha  
- Becomes Authorised Distributor for Tsubaki, Bega, and NAK

**2015** - Becomes Authorised Distributor for Gates, Continental and THK

**2016** - Joint Venture with Ehrco Hydraulics Hose

**2017** - Opens branch in Cote d' Ivoire, Lebanon and Dammam (KSA)  
- Produces BW Brake Pads, Shoes, and Discs  
- Produces BW Clutch Sets, Fuel Pumps, and C.V. joints  
- Becomes Authorised Distributor for "KTR, Airman, Sematic, Nisshinbo, Donaldson, Federal Mogul, BECO, and EKD

**2018** - Opens Tunisia branch  
- Produces BW Automotive Hoses  
- Joint Venture with 3ISP  
- Becomes Authorised Distributor for Thyssen Group "Rothe Eede" in the MENA Region

**2019** - Celebrates Rolman World's 50th Anniversary  
- Produces BW Roller Chain  
- Starts official relationship with SKF

**2020** - Launches BWI Power Generation  
- Opens Rolman World UK across 3 branches  
- Introduces B.World Logistics division

**2021** - Becomes an Eco-Friendly company by implementing solar-panels and temperature control system





# Milestone



## Our Vision

To change the face of Industrial Power Transmission Parts, Automotive Parts, and Services Distribution in the Middle East & Africa and to bring our unique strengths to generate new value across Europe.



## Our Mission

To keep our customers moving.

We will stand with them wherever and whenever they need us by providing the best solutions, the best advice, and the best service.

We aim to set the standards for service in the region.



## Our Values

**Dedication:** Our company ethos is based on loyalty, trust, honesty, and responsibility towards our customers, partners, suppliers, and staff.

**Collaboration:** We take pride in working collectively with the world's biggest suppliers and customers. We believe open, transparent communications is the way to promote an interchange of knowledge resulting in strong relationships and partnerships.

**Accountability:** We strive for maintaining the reputation that we have attained over the last 50 years, by working with acclaimed brands via dedicated investments. We will continue to demonstrate our relevance in the market with our inventory availability, strong logistics, experienced employees, and high-quality products and services.



ROLMAN  
WORLD

# Partnership with Our Suppliers

## The Secret of our Success

Rolman World's reputation is built on achieving the triad of customer objectives – quality, value, and choice. Our secret is not merely to achieve quick delivery of parts and services but also the most genuine. As Authorised Distributors of many of the world's premier brands, this reputation is backed by the continued and comprehensive support of our OE manufacturers.

Bearings are the foundation of our business and we stock the MEA's widest collection of the finest brands.

Our connections with the world's largest manufacturers give us access to high-quality technical and service support, enabling us to bring unrivalled contribution

to the market in our tenacious bid to deliver the most wide-ranging power transmissions solutions and automotive spare parts.

Our range includes many complementary products like belts, seals, chains, couplings, and greases. We also offer meaningful and customised solutions for replacement parts and services in cooperation with our manufacturers for all applications needed.

We also manufacture our own range of BW bearings, spare parts, lubricants, and generators each exhibiting the pinnacle of quality standards and setting a new benchmark to our competitors for a range of budgets.





# Serving the MEA region & branches

## Global reach – Local service.

Rolman World Group has **22** branches strategically located in **12** key EMEA countries. Our firm belief is that complete product and service satisfaction can be consistently achieved when a distributor is aware of the customer's needs.

Our customers have lauded us for being with them at every stage right from the product introduction and description to the order placement, delivery, and support. This personal handling of our customers and other stakeholders has helped us expand our presence globally.

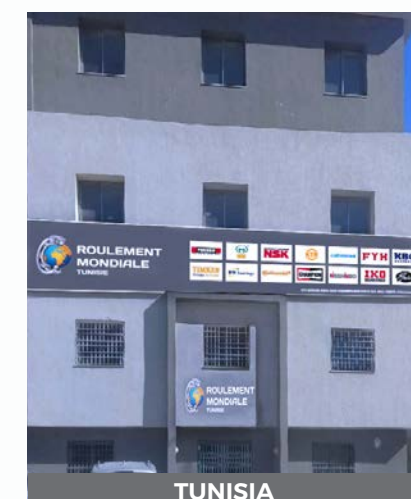
In areas where Rolman World does not have a direct presence, we ensure that our products reach the customer effortlessly



## Our Branches

Our 22 branches are located tactically to ensure we are positioned to supply the high-demand regions with the best products and services in a timely manner. Each company is situated in key locations, with a substantial inventory from the world's top manufacturers of mechanical power transmission and automotive replacement parts.

Each branch has the full support of our headquarters in the United Arab Emirates. This ensures that each region has access to uninterrupted attention and support at all times from the headquarters. Rolman World has established strong connections that ensure that every customer in each region is delivered what they desire - a first-class service.



## Key MENA Countries

- UAE
- Algeria
- Egypt
- Iraq
- Ivory Coast
- Jordan
- Lebanon
- Libya
- Qatar
- Saudi Arabia
- Tunisia
- UK

## Regional offices & Distributor Network

- |                           |                                |              |                |
|---------------------------|--------------------------------|--------------|----------------|
| ● Afghanistan             | ● Democratic Republic of Congo | ● Malawi     | ● South Korea  |
| ● Angola                  |                                | ● Mali       | ● Somalia      |
| ● Armenia                 | ● Djibouti                     | ● Mauritania | ● Tanzania     |
| ● Azerbaijan              | ● Eritrea                      | ● Morocco    | ● Tajikistan   |
| ● Bangladesh              | ● Ethiopia                     | ● Mozambique | ● Togo         |
| ● Benin                   | ● Georgia                      | ● Namibia    | ● Turkey       |
| ● Belarus                 | ● Ghana                        | ● Nigeria    | ● Turkmenistan |
| ● Botswana                | ● Guinea                       | ● Niger      | ● Uganda       |
| ● Cameroon                | ● India                        | ● Oman       | ● Ukraine      |
| ● Central Africa Republic | ● Italy                        | ● Russia     | ● Uzbekistan   |
|                           | ● Kazakhstan                   | ● Senegal    | ● Yemen        |
| ● China                   | ● Kenya                        | ● Singapore  | ● Zambia       |
| ● Chad                    | ● Kyrgyzstan                   | ● Spain      | ● Zimbabwe     |



## Five Specialised Divisions

In order to professionally support our growing portfolio of applications and solutions, Rolman World Group has divided its business into 5 specialised divisions, each with a set of differentiated strategies – Industrial, Automotive, MRO Services, Power Generation, and Logistics.

The approach that has proved crucial to set us apart from our competitors is that we function by focusing on ensuring that specialist staff in each division are present and by continuing to deepen our technical knowledge, expertise, and service efficiency.



# Keeping the WORLD IN MOTION



# Industrial Trade



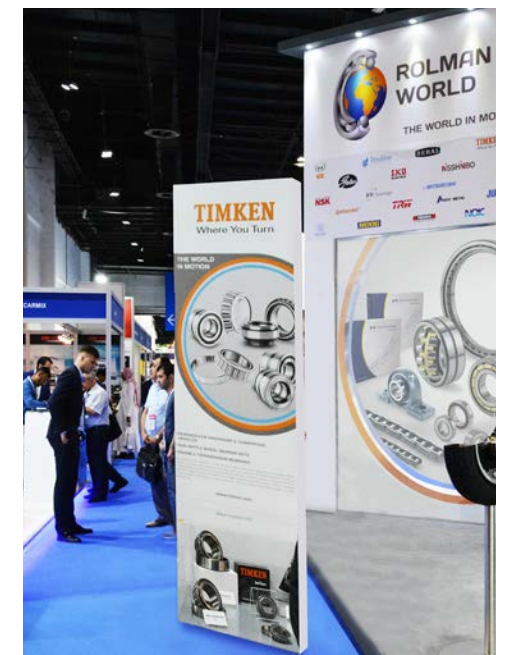
## Industrial Trade

### Local Stock and Service from Global Suppliers

The MENA region is home to rich raw materials. Thus, the manufacturers in the region have become the key suppliers to the world. They help us obtain the resources in a timely manner. This drives us to procure our products from our suppliers 24/7. This, in turn, allows us to supply goods to our customers on time.

Covering the key industries across the MEA region, and with the support of the world's leading OEM manufacturers, Rolman World carries a comprehensive range of wholesale and retail stock of bearings, mechanical power transmission spares, and many complementary products. We make sure customers have everything they need to keep their production running and help their maintenance teams to optimise machine reliability and efficiency.

Catering to more than 70 countries across the region requires us to work with highly skilled suppliers who operate around the clock to offer the right parts, in the right places, and at the right time. Rolman World possesses a major investment of stock in partnership with distributors in every part of the region.



#### Our products include:

- Bearing
- Linear motion
- Belts and Pulleys
- Chain
- Seals
- Sprocket and Sleeves
- Couplings
- Filters
- Lubricants and Automatic Lubricators



# Automotive Trade



## Automotive Trade

### Genuine Spare Parts from Original Suppliers

Rolman World Group is perfectly positioned to serve the needs of the Middle East, Africa and Europe's Automotive spare parts industry. We supply a complete range of components for Driveline, Transmission, Suspension, Steering, Braking, and Corner modules in passenger cars, light trucks, commercial vehicles, and off-road machinery. Our range of high-quality products is able to withstand the most gruelling conditions.

Since safety is one of our core objectives, we make sure that our automotive parts come from the biggest and best OE automotive suppliers, and are all designed and manufactured to the highest quality and safety standards. Our suppliers are selected on the basis of their OE reputation and the attention they have to the quality and safety of their products.

Our Central Distribution Centre in Jebel Ali holds a vast stock of automotive spare parts that we distribute to our branches and partners.

#### ✓ Our products include:

- Bearing
- Engine Bearings
- Belts
- Seals
- Brake Pads
- Filters
- Lubricants
- Shock absorbers
- Suspension parts and Cables





# Industrial Services (MRO)

## Rolman World Industrial Services - A Member of Your Maintenance Team

Rolman World has developed a strong partnership with end-users based on trust, respect, and success, to cooperate and discuss requirements on their maintenance processes, in order to increase productivity and reduce cost, with a focus on the efficiency of their production equipment, power transmission products, hands-on support, and training programs.

Our growing team of dedicated specialists and MRO sales engineers have been carefully selected across the region for their qualifications, skills, knowledge, and experience. They are able to work confidently and collaboratively with clients to achieve customised solutions. A thriving communication covering all aspects of products, services, consultation, and training helps to make us the most sought-after suppliers in the MENA region. This communication at every step with our customers is not only to stay ahead of the competition but also to achieve an error-free process in the delivery of our products and services.



### MRO Services



#### Stock Services

- Express & Line-Side Delivery
- Customer Stock Audits
- Component Condition Assessment



#### Cost Down & Best Practice

- Application Reviews
- Bearing Selection Advice
- Machinery Diagnostics



#### On-site Technical Support

- Mounting & Dismounting
- Equipment Alignment Services
- Equipment Repair & Overhaul Services



#### Component Failure Analysis

- Failed Component Analysis
- Root Cause Analysis
- Lubrication Analysis



#### Tools & Monitoring Services

- For Mounting & Dismounting
- For Equipment Alignment
- Condition Monitoring & Analysis



#### Product Training

- Industry & Application Specific Training
- Bearing Handling and Fitting
- Best Practice and Case Studies

## Industrial Sectors

Team Rolman World is known for collectively working with our supplier and customer maintenance and production teams assisting them during the analysis, evaluation and selection process to identify suitable solutions for every application and operational requirement covering the following fields:



#### Metals

- Steel production
- Aluminum and non-Ferrous Metals Production
- Cable, Pipe, Tube and Wire Manufacturing
- Fabricated Metal Product Production



#### Mining, Quarrying & Agriculture

- Mining, Quarrying & Crushing
- Cement and Clinker Production
- Manufacture of Ceramics & Building Materials
- Construction and Agricultural Equipment



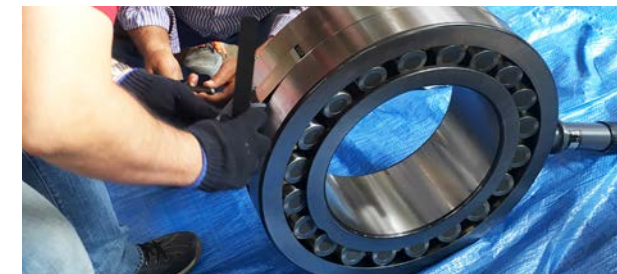
#### Energy & Utilities

- Oil and Gas Extraction and Processing
- Petrochemical and Refined Petroleum Products
- Power Generation
- Water and Waste Management



#### Processing & Automation

- Food and Beverage
- Chemical and Agrochemical
- Paper and Packaging
- Glass, Rubber and Plastic



## Rolman World Facilities

As knowledge is the start of better performance, at our Dubai Headquarters, we have designed our operation with service at the forefront of our business. Our 60-seat auditorium gives us the ability to bring together our customers, engineers, and suppliers to discuss solutions and spread knowledge, as well as showcasing the latest technologies in the industry.

To support this theory, we have a meticulously planned workshop to demonstrate the practical techniques of mounting and dismounting of our products in a variety of applications and sizes. We fully believe that such training contributes to better maintenance practices, plant reliability and efficiency.

At Rolman World Industrial Services we focus on excellence. We ensure our well-trained staff, in collaboration with our world-class OE suppliers, are continually improving their knowledge of industry best practices and are working with the right tools and techniques to deliver complete solutions in maintenance and repair.





# Power Generation

Rolman World is a leading and authorised distributor of Japanese generators, welders, and air compressors in the MEA region. We provide power solutions to the industry from premium brands such as:

## DENYO Generators & Welders

Japan's leading manufacturer of engine-driven generators, welders, and tower lights has evolved its finesse in the product range to include high-powered mobile lighting, self-propelled work lifts, and a myriad of generators.



Denyo Generators - 5 - 1100 KVA



Denyo Welders - 400 - 500 AMP



Denyo Spare Parts

## Donaldson Filters

With the rich experience of a century, Donaldson Filters makes an innovative, customer-friendly range of filtration devices that cater to a wide range of filterable products like fuel, air, and lubricants.



Donaldson Fuel, Oil and Air Filters

## AIRMAN Generators & Compressors

Hokuetsu Industries, is the top manufacturing brand of portable type diesel engine generators and air compressors in Japan, with more than 8 decades of impressive experience and design. The generators are built with high soundproof technology and offer noise-less service and can withstand tough metal construction.



Airman Compressors - 185 - 1550 CFM



Airman Generator - 25 - 600 KVA



Scissor Lift - 4 - 10m height

## BW International Power Generator

After years of hard work, research, planning, and testing, we are proud to finally launch our BW Generator products into the market in August 2020.

BW Generators are built to resolve operating needs as well as provide constant, reliable power for standby and prime power sold at cost-efficient prices. They are in high demand in the MEA region, based on their design to withstand 100% humidity and temperatures up to 50°C. Our current range is for 50-60Hz and from 15kVA up to 2500kVA.

Equipped with high-performance components, the compact UK-built PERKINS engines, deliver high power densities that give users a durable product at a low running cost. The STAMFORD 3-phase alternators (12 leads) ensure that no matter what the national operating voltage system, the Hz required is not compromised and performance remains stable. The control system UK-built DEESEA has the most updated controlling technology on the globe. The DGS series has ultimately been designed to run smoothly and efficiently, with low noise pollution, whilst meeting ISO 8528 standards.

We also provide engineering solutions for after-sales and maintenance for all major brands including filtration products.



BW Int Power Generators - 15 - 2500 KVA



# B.World Logistics

## B.World Logistics



### Simple Solutions to keep your WORLD IN MOTION!

B.World Logistics has been part of Rolman World's business since opening our new warehouse facility in JAFZA Jebel Ali Free Zone, Dubai in 2015. Until recently this facility was purely for our own product shipments to our 22 branches across the MEA region.

We have now opened up this service facility to customers, where they can request B.World Logistics for themselves, to help store, pack and ship worldwide.

We offer customers short-term options with minimum storage commitment which helps them free up any financial or long-term commitments. We are able to offer a complete logistics service for temperature and non-temperature sensitive commodities, without any major investment.

B.World additionally offers value-added services which considerably alleviates the concerns of our valuable customers.



#### Facilities

- Free zone Warehousing and Distribution
- Open and Covered Storage
- Palletized & Bulks Storage
- Temperature Control
- Inventory Control
- 16 Loading Bays
- Located within 5km of Jebel Ali Port



#### Services

- Air Freight (Import & Export)
- Sea Freight (Import & Export)
- Land Freight (Import & Export)
- Overland Transport
- Customs Clearance
- Quality Control



#### 3PL

- 24 hours security with CCTV facility
- Supply Chain Management
- Customs Compliance & Consultancy
- Sort, Segregate & Store
- Cross Docking, Picking, Packaging, & Repackaging
- Labelling & Relabelling

The Rolman World team is working on further adapting the logistics requirements, based on our customers' needs and feedback, in order to be able to offer the best possible services to meet their needs.

We are capable of developing a detailed understanding of our client's businesses and partnering with them to offer an end-to-end logistic solutions.



# BW Products

For decades, Rolman World has been serving customers across the region, discussing the precise demands of each application. In order to better serve customer requirements, since 1995, Rolman World started to establish its own - BW product range. A product built for "Quality & Value", to deliver performance, reliability, and affordability.

Starting from bearings, with growing demands from the market, BW products have been developed covering a range of bearings, universal joints, lubricants, chains, brake pads, filters, and generators. The "BW bearings" & "BW International" brands are global trademarks registered around the region, and our products are available from our intercontinental partners.

## BW bearings

BW bearings, produced within microns of perfection, have been developed to reduce friction and allow for a smoother rotation, achieve high speeds and loads; and manage large amounts of torque.

BW bearings are manufactured at strategically selected, specialist manufacturers. Our manufacturers are selected for their ISO9001 accredited capabilities, including raw materials selection, manufacturing process capabilities of heat treatment and grinding processes, online and offline quality control processes, etc. Based on the philosophy of "Quality & Value", we only allow products that have passed our strict quality process into the BW product range.

For Industrial usage, in addition to standard ball and roller bearings, we have also developed pillow blocks, plummer blocks, adapter sleeves, linear bushes, rod ends, steel ball/roller & other special ranges of bearing products. Designed as solutions for specific applications, the special bearing range including key replacement parts for forklift trucks, agriculture machines, Sheaves, excavators, slewing bearings for construction machinery.

For automotive usage, our complete range of wheel bearings and hub units, engine accessory bearings, clutch release bearings, steering bearings, tensioner bearings, water pump bearings, and universal joints offers customers an economical option to bearing solutions from genuine and OE parts suppliers. We offer alternatives that match the original parts.



## BW Roller Chain

To continue the success, end of 2019, BW Roller Chain has been adding to our product portfolio under the "BW International" brand; thereby offering a more complete range of parts to suit a wide variety of applications and industry requirements.

BW Roller Chain range covers both single and multiple strands as per ANSI & BSI standards and is designed and manufactured to meet our customers' application requirements. In addition to the chain, we also offer additional connecting links and offset links, enabling customers to fix the chain as required and/or customize its length.



## BW Brake Pad

To deliver "Quality & value", we continually strive to develop and improve our products. In 2020, our BW brake pad was developed under our "BW International" brand, which covers primarily truck replacement applications to serve the diverse needs of customers.



## BW Spare Parts

To adapt to the most challenging conditions of our customers' applications, BW's wide range of spare parts have been engineered to perform flawlessly in the world's harshest environments, delivering reliability and performance across the Middle East, Africa, Russia, Asia, and European markets. We also developed an extensive portfolio of products including brack disc and drum, brake shoes, brake pad, clutch set, fuel filters, C.V. Joint and many more.



## BW Generator

The latest addition to our growing product range is BW International Power Generators. Built with customers operating needs in mind, BW International Power DGS series generators offer customers constant, reliable power for standby or prime power, at budget-friendly prices. Designed for the MEA region they withstand humidity and temperatures up to 50°C.

Our current range is for 50-60Hz and from 15kVA up to 2000kVA.





# BW Lubricants

To complement our full range of bearings to suit most applications, we have developed our own range of BW lubricants, manufactured to the highest OE standards, and covering a wide range of automotive and industry-specific applications. These quality greases are developed to achieve even further value from our bearing solutions.

These high-grade greases will help maintain and ensure that our customers machinery and applications continue

to run even under the very harshest of conditions of the Middle East & African climates.

Tribology is the specialist science of friction on, and a critical element in, the life of bearings and any spare part of motion required in machinery.

By selecting the correct lubricant for their applications, customers maximize their bearing life, save money, improve efficiency, reduce unplanned downtime.



Available sizes

	200 g Pouch	400 g Cartridge	500 g tin	1 kg tin	5 kg tin	18 kg tin
<b>LGMT 3</b> General Purpose	•	•	•	•	•	•
<b>LGEP 2</b> High Load, Extreme Pressure	-	•	-	•	•	•
<b>LCAG 3</b> Special High & Low Temperature	-	•	•	•	•	•
<b>LGHP 2</b> High Performance, High Temperature	-	-	-	•	•	•
<b>LGFP 2</b> Food Compatible Bearing Grease	-	-	-	•	-	-
<b>LGFR 2</b> Fire Resistant Bearing Grease	-	-	-	•	-	•
<b>LGHB 2</b> High Load, High Viscosity	-	-	-	-	-	•



# Rolman World UK



Following the acquisition of a well-known UK automotive bearing distributor, Rolman World Group has established Rolman World UK to serve the UK automotive aftermarket. The company has been in the market since 1967 and has branches in Wisbech, Chorley, and Strathclyde.

These strategic locations allow us to provide next-day coverage for the UK market. The Rolman World UK is the leading independent supplier for automotive wheel bearing kits, and as a company, we are differentiated by our strict policy of supplying quality O.E. approved components in our Premier brand.

Rolman World UK's offer to the market, of both our Premier brand and our alternative value offering, is the strongest automotive bearings and kits offer in the UK with a wide range of products including:

- Wheel bearing kits
- Wheel bearings
- Timing belts and tensioner kits
- Tensioner & auxiliary components
- Timing belts
- Gearbox bearings & components



Rolman World Group has made a major investment in more than 85,000 stock items for Rolman World UK to ensure that all your demands are met. At all times we aim to maintain in stock >98% of the UK's top selling wheel bearing kits.

**We also offer comprehensive services to fulfil your requirements that include:**

- Quality OEM approved parts from a specialist
- Local stock
- Free local delivery
- Next day delivery across the UK
- Commercial pricing
- Local garage training
- Marketing materials to support the Premier brand and the other Rolman World UK brands

**For every local market our distribution channel approach includes:**

- Appointing authorised distributors for Rolman World UK's own branded products
- Major national automotive parts distributors and automotive specialists

Rolman World UK is proud of its long history and leading position within the UK wheel-bearing automotive aftermarket.



# Rolman World Group



## ROLMAN TRADING LLC DEIRA BRANCH

9 C ST, Baniyas Square,  
Deira, Dubai  
PO BOX 25054

Tel: +971 4 222 2732  
Fax: +971 4 222 3495

rwt@rolman.com



## POLE DE ROULEMENT CASABLANCA BRANCH

Quartier la Gironde ,Rue  
libourne angle route ouled  
ziane-Casablanca

Tel: +212 522 541 519,  
+212 522 541 656  
Fax: +212 522 541 523

info@polederoulement.ma



## BEARING WORKS TRADING CO. RIYADH BRANCH

P.O.Box: 255530  
Owaidha Industrial Area,  
Riyadh - 11353  
Kingdom of Saudi Arabia

Tel: +966 11 213 5235  
Fax: +966 11 213 6161

sales@bw-saudi.com



## ROLMAN WORLD FZCO MAIN BRANCH

P.O.Box: 25054  
Jabel Ali, Dubai  
United Arab Emirates

Tel: +971 4 887 3700  
Fax: +971 4 887 3701

sales@rolman.com



## ROULEMENT MONDIAL TUNISIA BRANCH

Zone Industrielle  
Megrine, Saint Gobain,  
Lot N°10, Tunisie

Tel: +216 79 297 602 / 603  
Fax: +216 79 297 604

sales-tn@rolman.com



## ROLMAN WORLD DOHA BRANCH

P.O.Box: 40412  
SYS 019 Sayer Building  
Barwa Commercial  
Avenue Industrial Area  
Doha, Qatar

Tel: +974 4005 2450  
Fax: +974 4001 6423

sales-qatar@rolman.com



## ROLMAN WORLD WISBECH BRANCH

23/24 Regal Road,  
Cambridgeshire,  
Wisbech PE13 2RQ,

Tel: +44 1945 46 40 97

sales-wi@rolman.com

## BEARING WORLD CO. IRAQ BRANCH

Al Sinak  
Baghdad, Iraq

Tel: +964 1 816 7427

hasan@bw-iraq.com



## ROULEMENT MONDIAL CÔTE D'IVOIRE BRANCH

Côte d'Ivoire, Abidjan, Treichville  
Boulevard des Armées, lots  
392 D et 393 A, Immeuble sis  
à l'intersection du Boulevard  
Valéry Giscard d'Estaing (VGE) et  
de l'Avenue 16.

Tel: +225 27 2124 6645  
Fax: +225 27 2124 6650

sales-civ@rolman.com

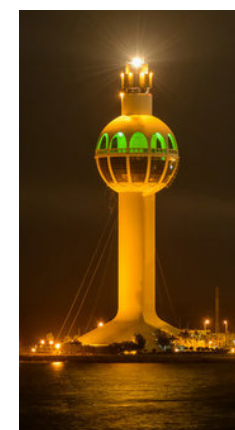


## INTERNATIONAL BEARING HOUSE CO. JEDDAH BRANCH

P.O.Box: 41583  
Bab Makkah, Al Zahid  
Buidling, Jeddah - 21531  
Kingdom of Saudi Arabia

Tel: +966 12 642 2040  
Fax: +966 12 645 8113

sales@ibh-saudi.com



## ROLMAN WORLD CHORLEY BRANCH

Unit 9, Common Bank  
Industrial Estate  
Ackhurst Road, Chorley,  
Lancashire PR7 1NH

Tel: +44 1257 26 42 66

sales-ch@rolman.com

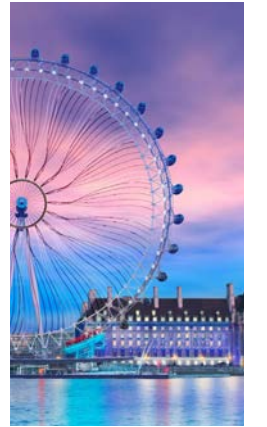


## ROLMAN WORLD STRATHCLYDE BRANCH

43 Deerdykes View,  
Westfield Industrial  
Estate Cumbernauld,  
Glasgow G68 9HN

Tel: +44 1236 72 81 31

sales-st@rolman.com



## BEARING WORLD & TRADE CO. AMMAN BRANCH

P.O.Box: 330480  
416 Prince Hassan St.  
Al Quesmeh, Amman, Jordan

Tel: +962 6 477 1115  
Fax: +962 6 477 1113

saad@bearingworldjo.com

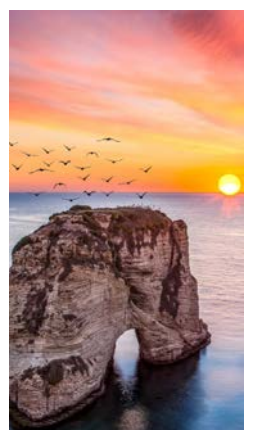


## ROULEMENT MONDIAL SARAL. BEIRUT BRANCH

New Hankach Street,  
Baouchriyeh, Dora,  
Beirut, Lebanon

Tel: +961 76 994 811  
+961 76 580 757

sales-lb@rolman.com



## ROLMAN WORLD IMPORT & EXPORT ALGERIA BRANCH

Cite Douzi 04 N:323  
(Souman) Bab Ezzour,  
Algiers, Algeria

Tel: +213 21 24 3875  
Fax: +213 21 24 3916

sales-al@rolman.com







**ROLMAN  
WORLD**



Just scan this QR code with your smartphone or visit our website at: **[www.rolman.com](http://www.rolman.com)** - there you will find a highly competent contact in your immediate vicinity



**ROLMAN  
WORLD**

@rolmanworld



RWCP-0051021